

# Rear Pivot Ball & Anti-Roll Bar Suspension Kit For "ULTRA GTP" #31295

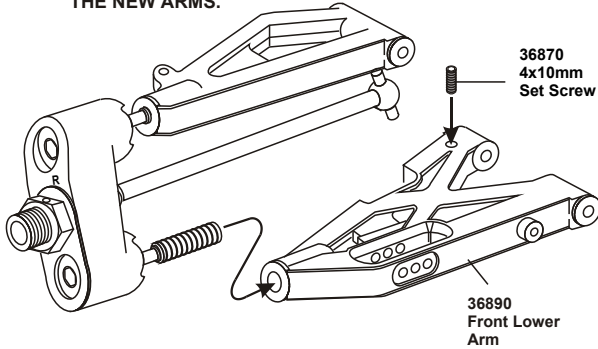
This rear pivot ball kit is suitable for those who already have "ULTRA GTP" car kit.

## ASSEMBLY OF THE NEW FRONT LOWER ARM

\* Follow these instructions to assemble this kit.

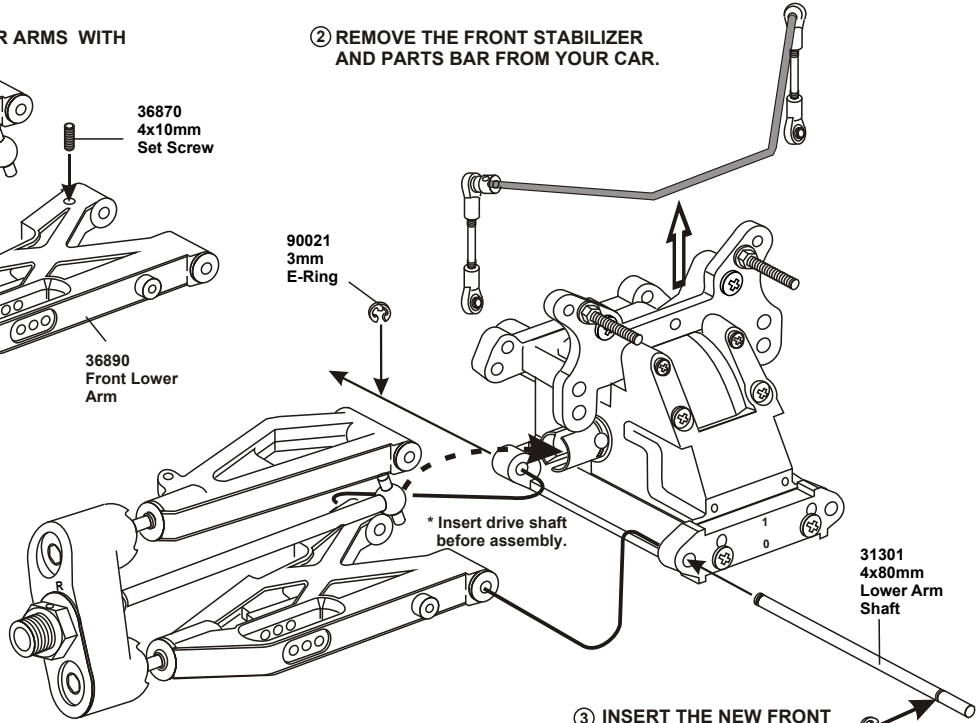
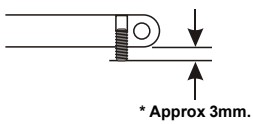
Assembly of the right and left hand side are the same.

- ① REPLACE THE OLD FRONT LOWER ARMS WITH THE NEW ARMS.



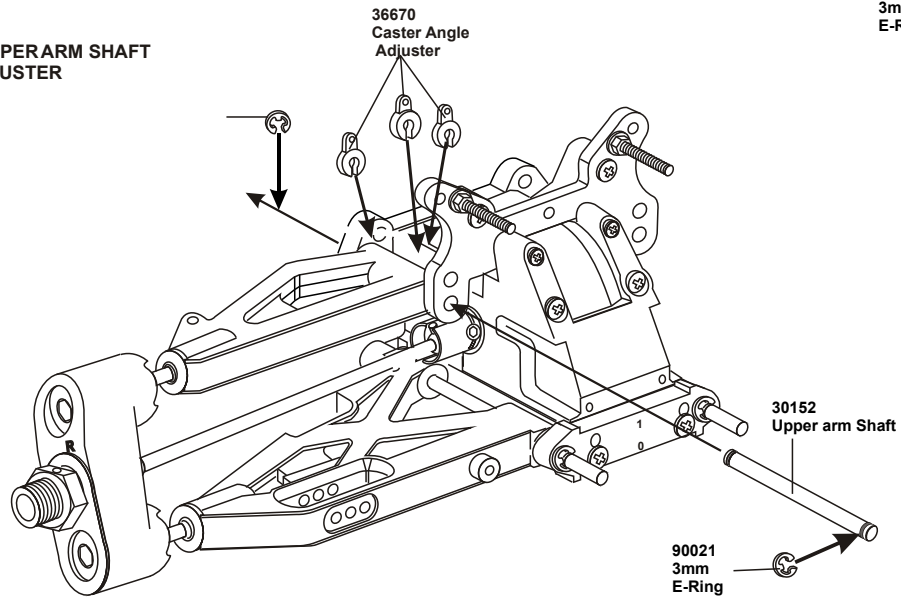
- ② REMOVE THE FRONT STABILIZER AND PARTS BAR FROM YOUR CAR.

\* A 4 x 10mm set screw is used to adjust the ride height.



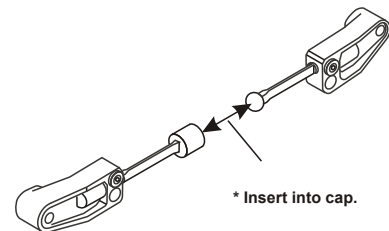
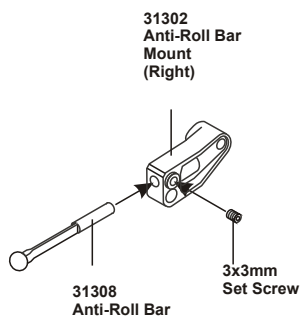
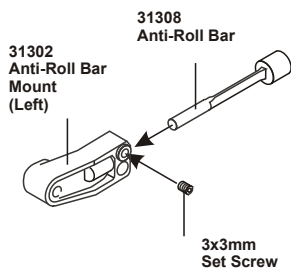
- ③ INSERT THE NEW FRONT LOWER ARM SHAFT.

- ④ ASSEMBLY OF THE UPPER ARM SHAFT AND THE CASTER ADJUSTER



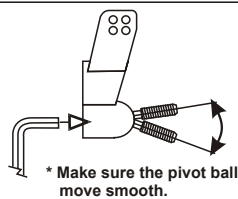
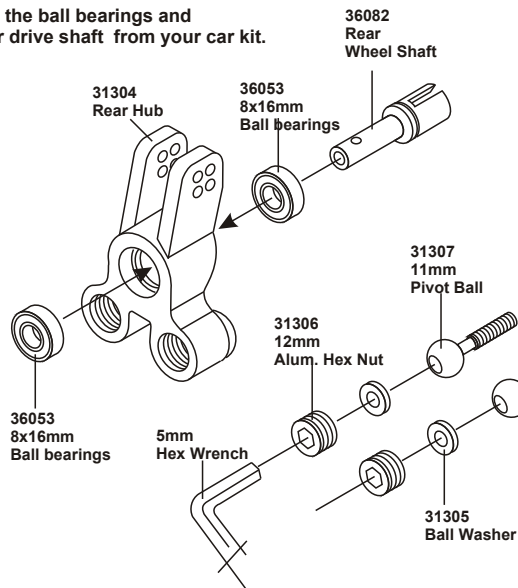
## ASSEMBLY OF THE ANTI-ROLL BAR

\* Builds two sets of anti-roll bars for the front and rear.

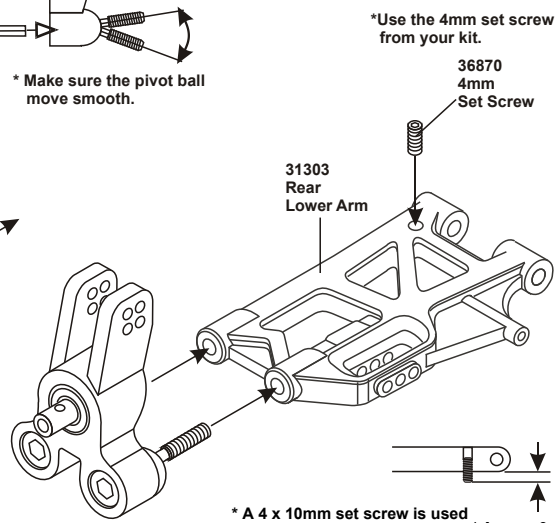


## ASSEMBLY OF THE REAR HUB

\* Use the ball bearings and rear drive shaft from your car kit.



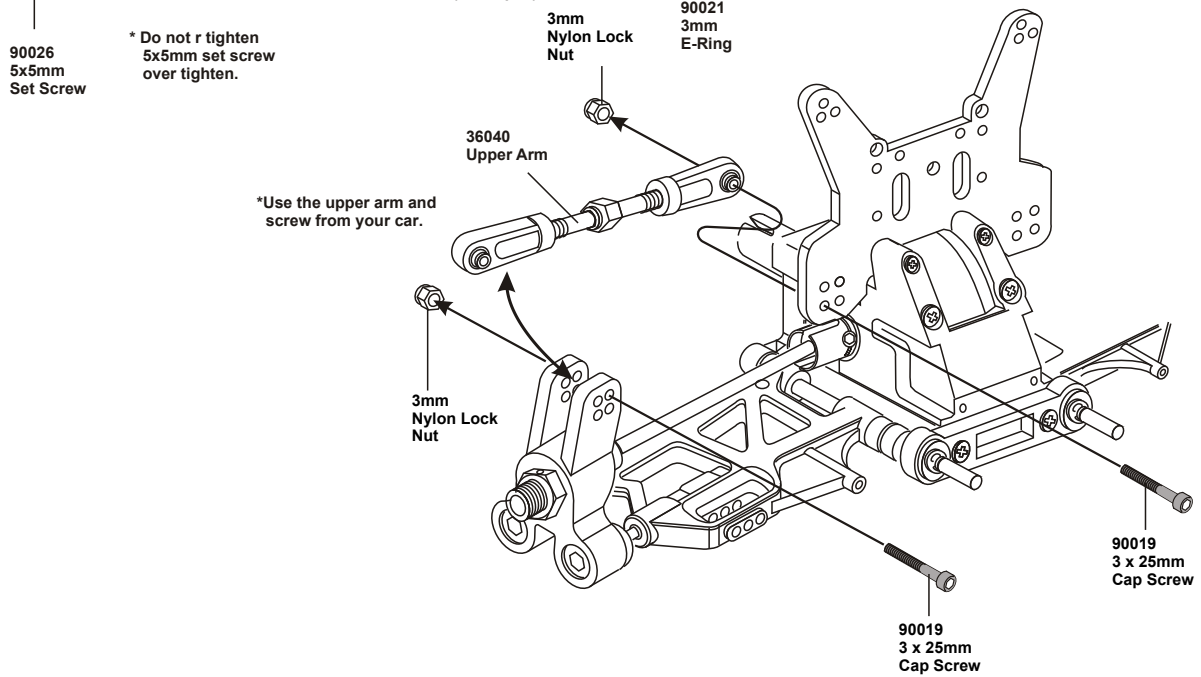
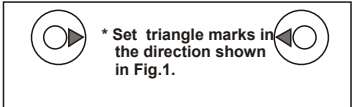
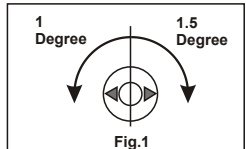
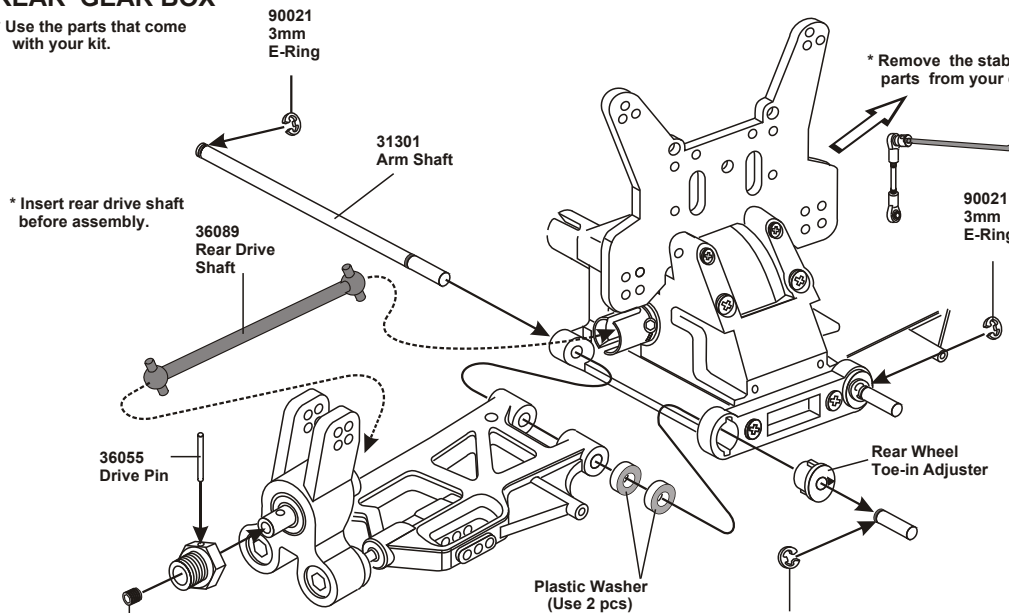
Assembly of the right and left hand side are the same.



## ASSEMBLY OF THE SUSPENSION ARMS ONTO REAR GEAR BOX

\* Use the parts that come with your kit.

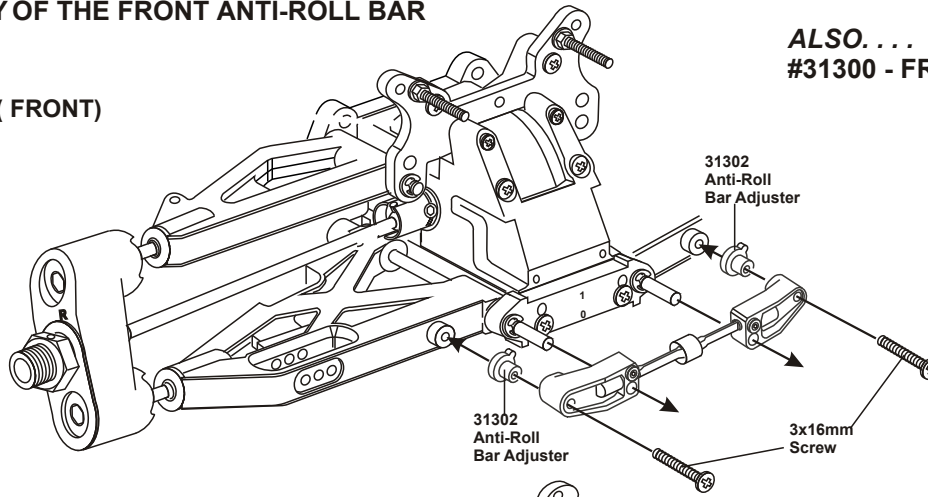
Assembly of the right and left hand side are the same.



# ASSEMBLY OF THE FRONT ANTI-ROLL BAR

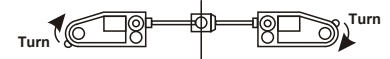
ALSO...  
#31300 - FRONT ANTI-ROLL BAR KIT

( FRONT )

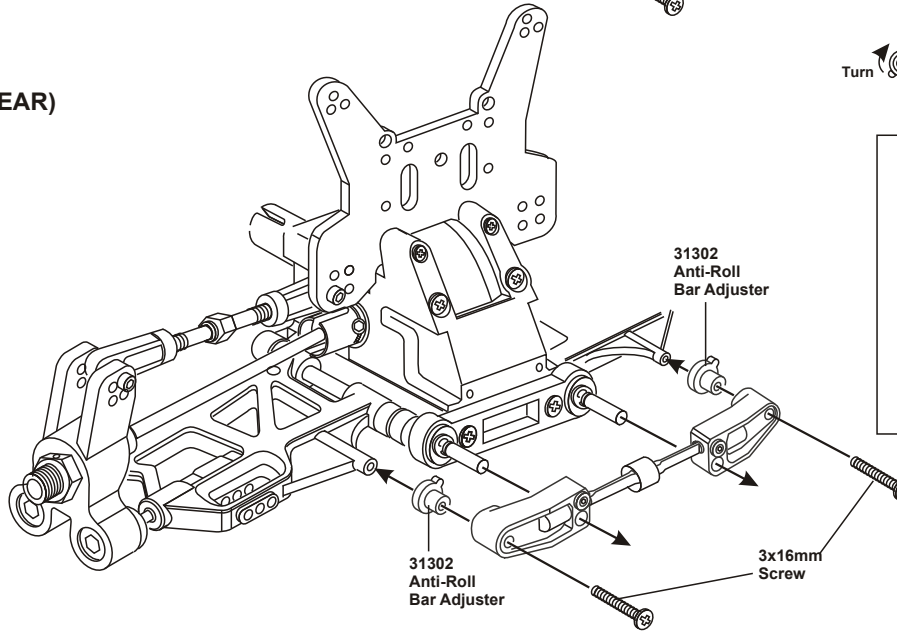


\*Turn the anti-roll bar adjuster keeping both side at the same angle.

\* Keep the ball of the anti-roll bar central.



( REAR )



Changing the angle of the anti-roll bar will change the strength of the arms

Anti-roll strength became weaker

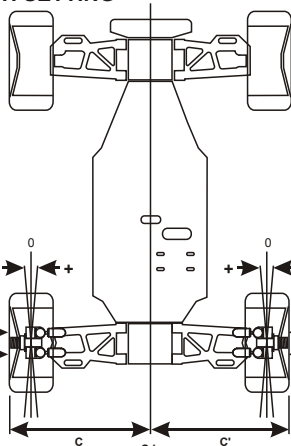
Turn

Anti-roll strength became stronger

ASSEMBLE THE FRONT AND REAR GEAR BOX ONTO YOUR CAR AS USUAL.

## SETTING GUIDE

### REAR WIDTH SETTING



Adjust A and B to the same length.

Adjusting B longer will make the rear tires toe-in (Positive).

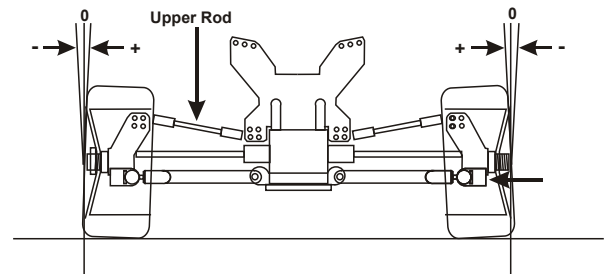
Adjusting A longer will make the rear tires toe-out (Negative).

\* Use a 2.5mm hex wrench to adjust the rear track width.

### REAR CAMBER SETTING

The rear camber adjustment can be made by changing the length of the upper rod.

Making the upper rod longer will make the camber positive. Making the upper rod shorter will make the camber negative.



## PARTS LIST

Item No.	Description	Qty
31308	Anti-Roll Bar	1 set
31301	4x80mm Arm Shaft	2 pcs
31302	Anti Roll Bar Mount / Adjuster	1 set
36890	Front Lower Arm	1 set
31303	Rear Lower Arm	1 set

Item No.	Description	Qty
31304	Rear Hub (Pivot Ball Type)	2 pcs
31305	Ball Washer	4 pcs
31302	Anti Roll Bar Mount / Adjuster	1 set
31306	Alum. Hex Nut	4 pcs
31307	Pivot Ball	2 pcs.