

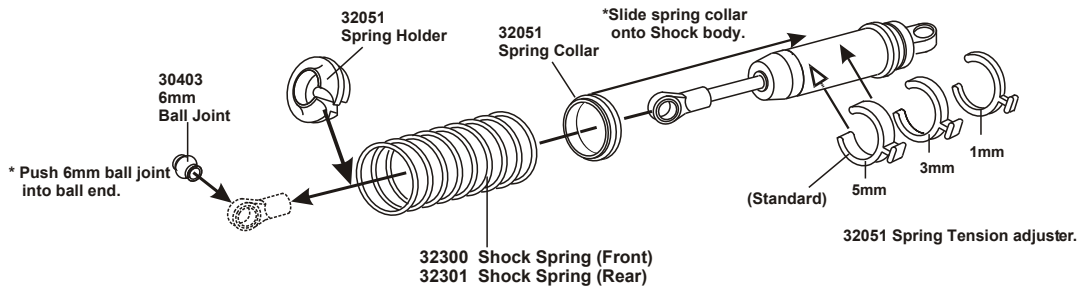
# ASSEMBLY SHEET FOR THE GTP CONVERSION KIT

**\* THIS CONVERSION KIT CONVERTS THE ULTRA GT LX & RTR, BLAZER SST, BLAZER MONSTER, HODR LX, ULTRA WORLDS AND WORLDS II CHASSIS INTO THE GTP CAR CLASS. ARM CHANGES, SUCH AS MBX PIVOT BALL, ARE NOT INCLUDED AND ARE NOT NEEDED FOR THIS CONVERSION.**

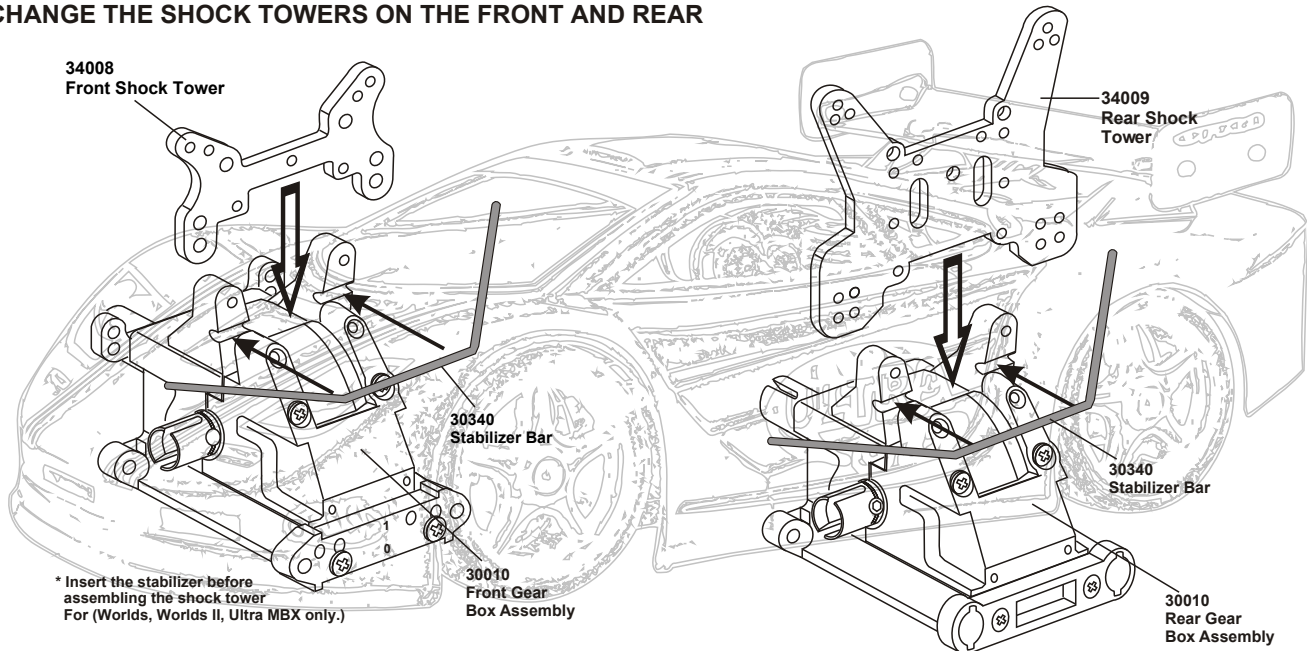
**\* FOLLOW THE INSTRUCTION MANUAL TO ASSEMBLE YOUR CAR.**

- Kit Includes:**
- LARGE SCALE BODY.
  - LARGE FRONT BUMPER AND FOAM BUMPER.
  - BODY MOUNTS.
  - BODY DECAL AND WINDOW MASKING.
  - NEW FRONT AND REAR SHOCK TOWERS.
  - HARDER RACING SHOCK SPRINGS.
  - GLUED TIRES ON BLACK STAR WHEELS.

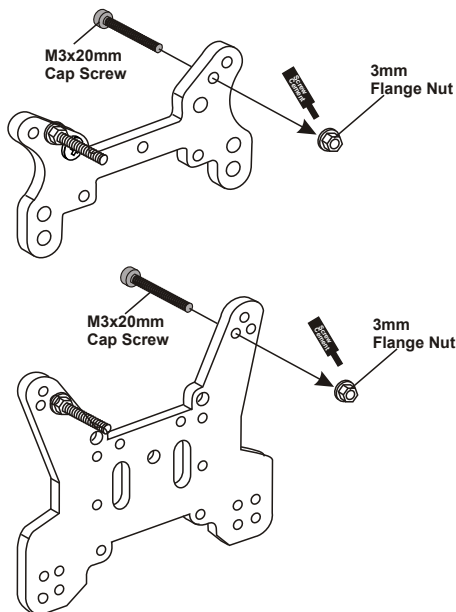
## ASSEMBLY OF THE FRONT AND REAR SPRINGS



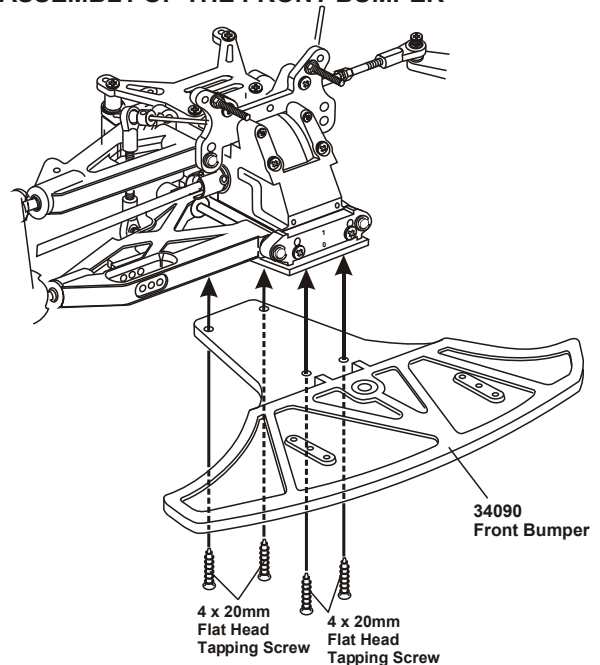
## CHANGE THE SHOCK TOWERS ON THE FRONT AND REAR



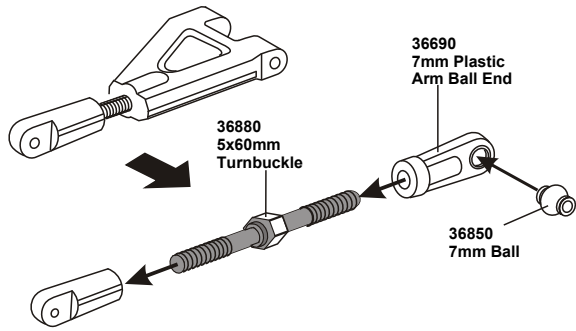
## ASSEMBLY OF THE SCREWS INTO THE SHOCK TOWER ( Assemble the front and rear shock as usual.)



## ASSEMBLY OF THE FRONT BUMPER

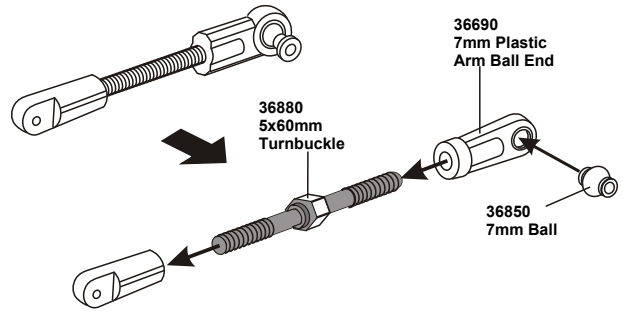


**For Hodr., Blazer SST., Blazer Monster, option**



\* Builds two upper arms for left and right hand-side.

**For "Ultra GT LX", option**



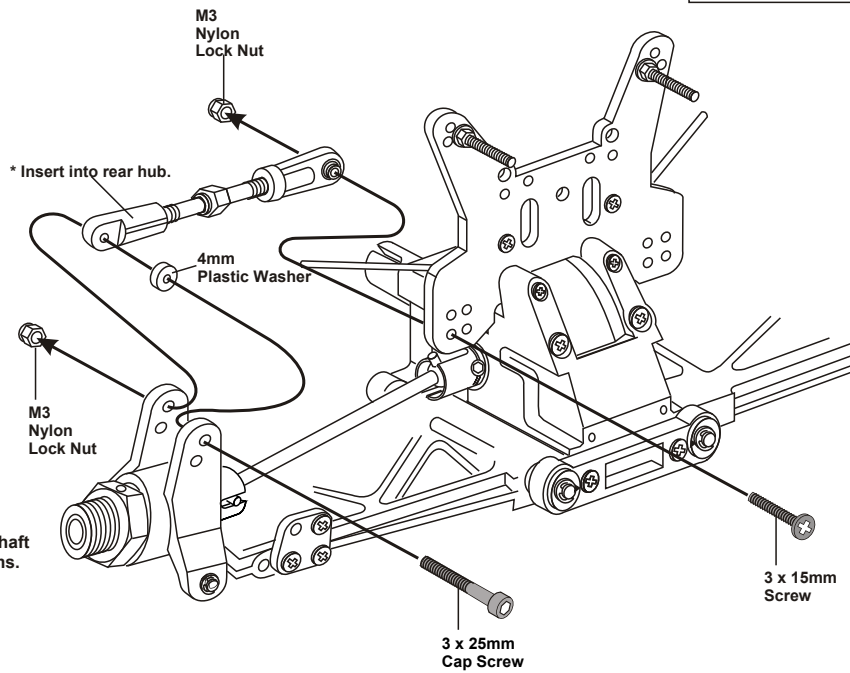
\* Builds two upper arms for left and right hand-side.

**ASSEMBLY OF THE UPPER ARM ONTO THE GEAR BOX**

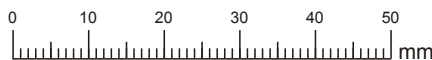
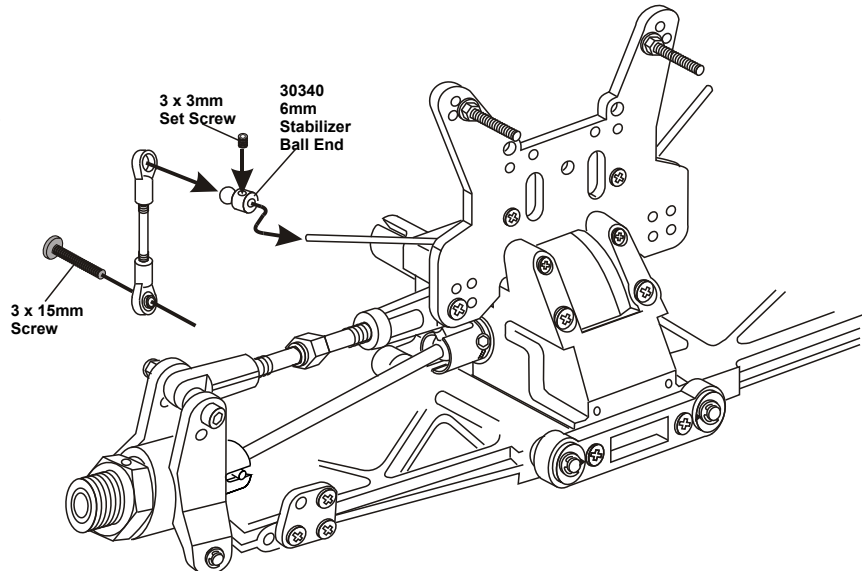
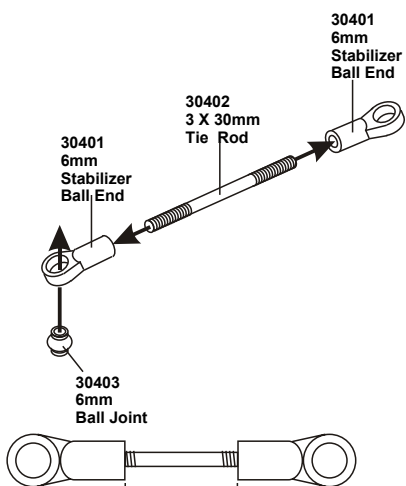
Assembly of the right and left hand side are the same.



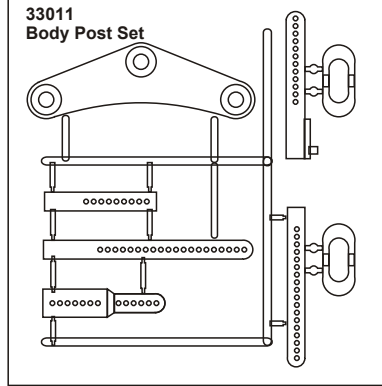
3 x 15mm Screw



**ASSEMBLY OF THE STABILIZER ROD**

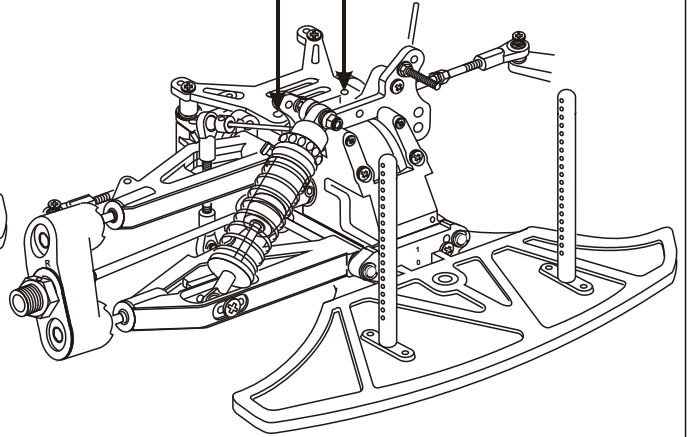
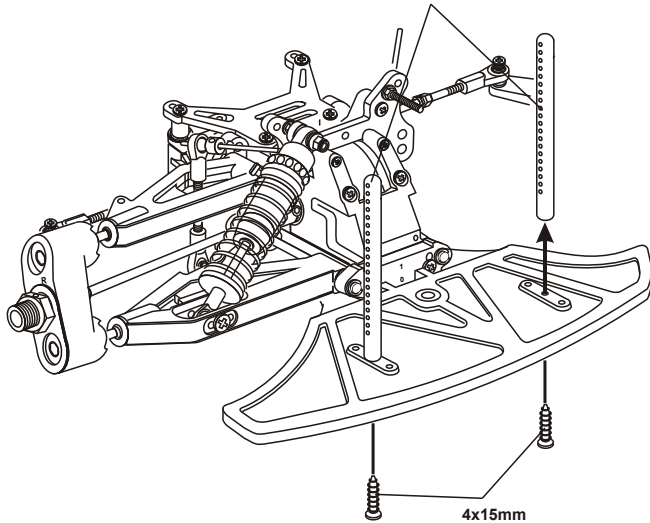
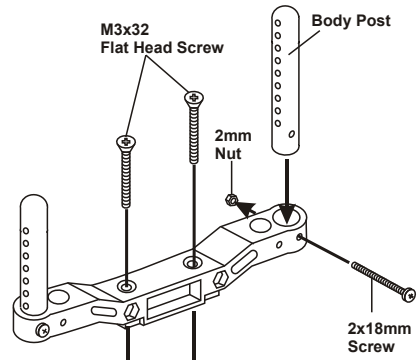


## ASSEMBLY OF THE FRONT BODY POST

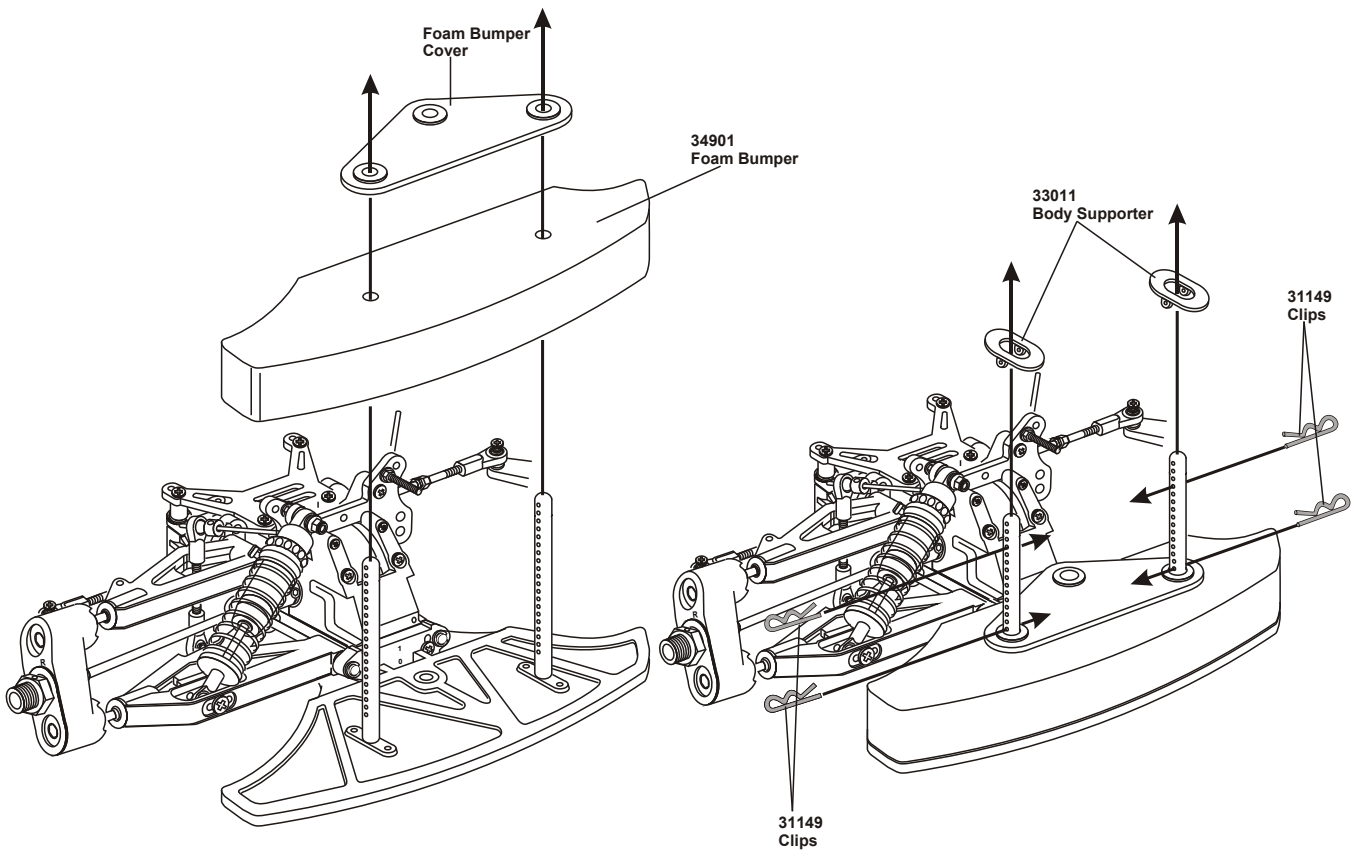


33011  
Front  
Body Post

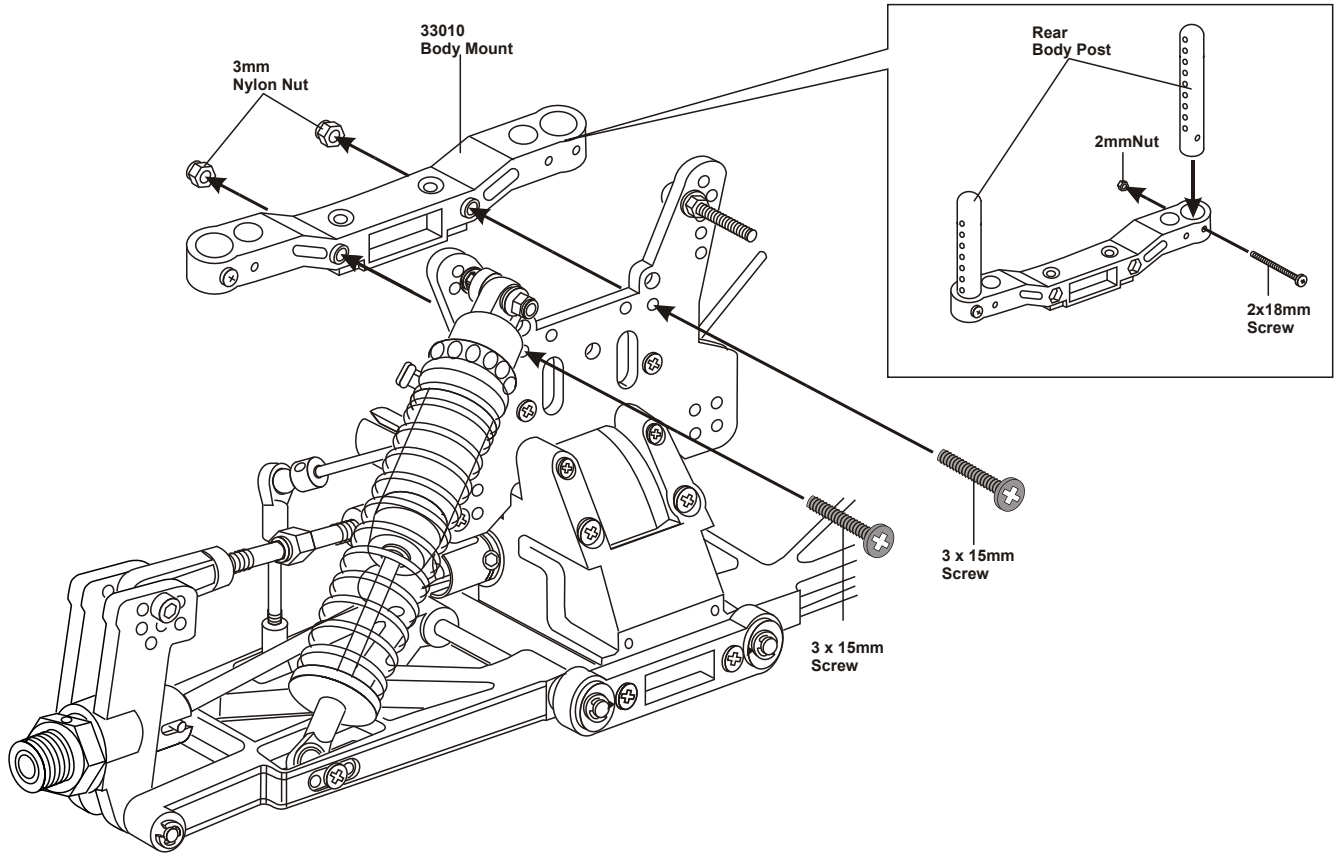
33010  
Front  
Body Mount



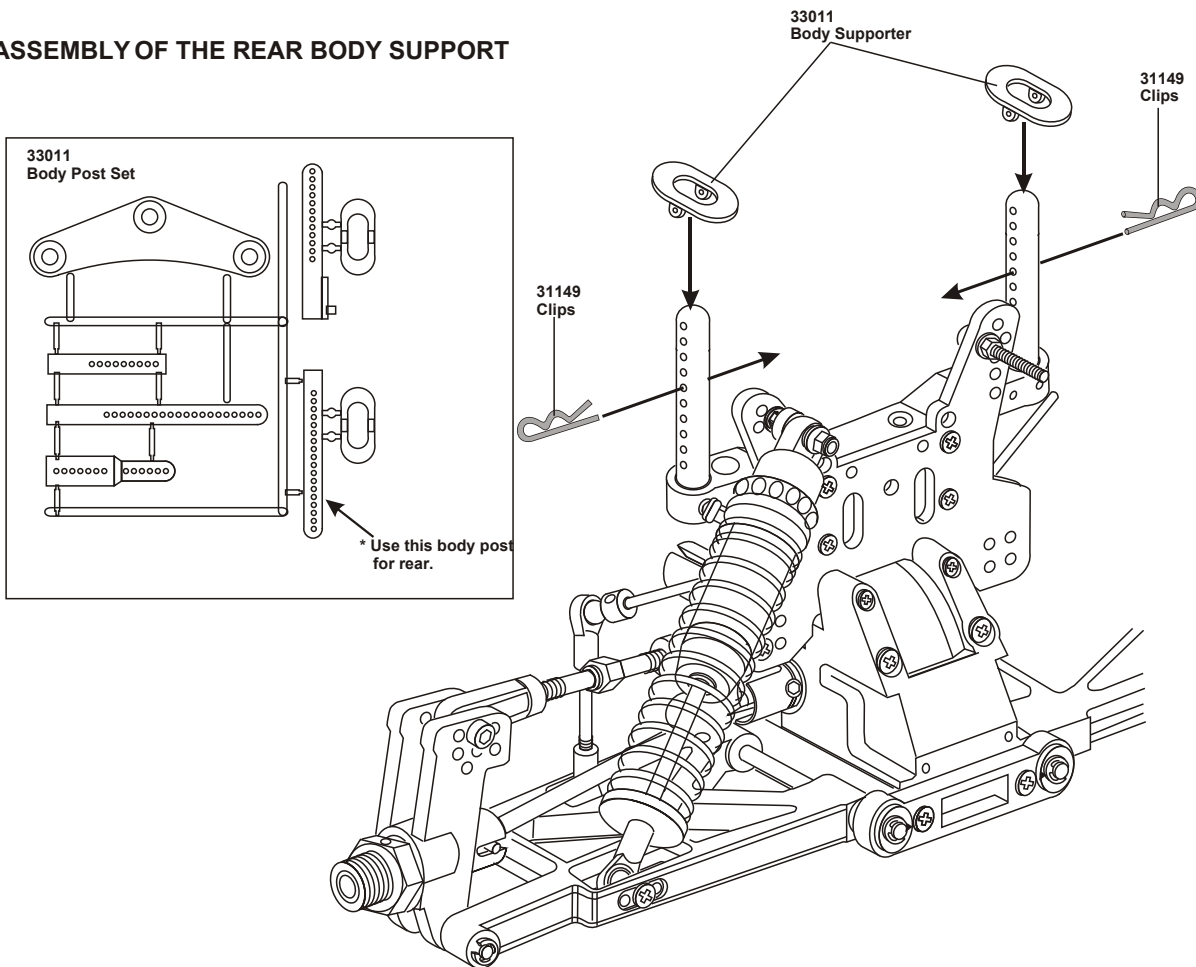
## ASSEMBLY OF THE FRONT FOAM BUMPER



## ASSEMBLY OF THE REAR BODY MOUNT



## ASSEMBLY OF THE REAR BODY SUPPORT



# ASSEMBLY OF THE TIRES AND WHEELS

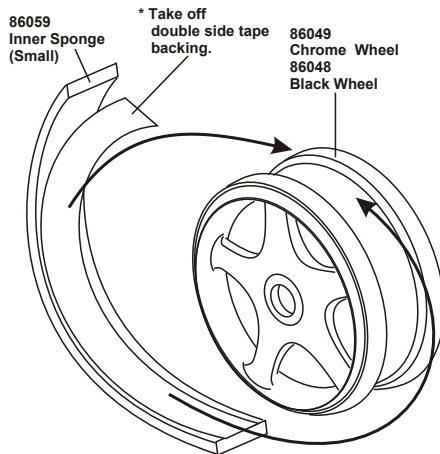
- 86044 - Red
  - 86045 - White
  - 86046 - Lime
  - 86087 - Yellow
  - 86048 - Black
  - 86049 - Chrome
- 17mm 5-star wheels,  
Two (2) pairs per bag.

- 86032 - Orange
  - 86033 - Chrome
  - 86034 - White
  - 86035 - Yellow
  - 86036 - Lime
  - 86037 - L.Gray
  - 86038 - D.Gray
  - 86039 - Red
- 17mm Dual Spoke  
wheels, Two (2) pairs  
per bag.

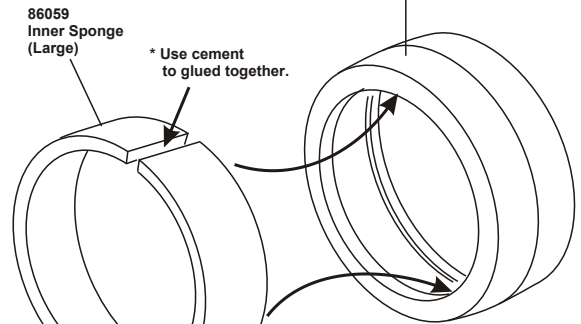
- 86050 - Slick Tire, No-Belt
- 86051 - Slick Tire, Belted
- 86052 - Street Tire, No-Belt
- 86053 - Street Tire, Belted

- 86504 - Pre-Glued Set, Slick
  - 86505 - Pre-Glued Set, Street
- Pre-glued set use 86045 wheels

\* The tires might be different as picture shown here.

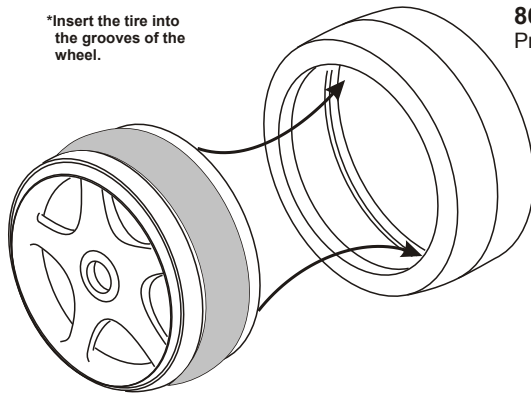


\* Stick the sponge to the middle of the wheel.

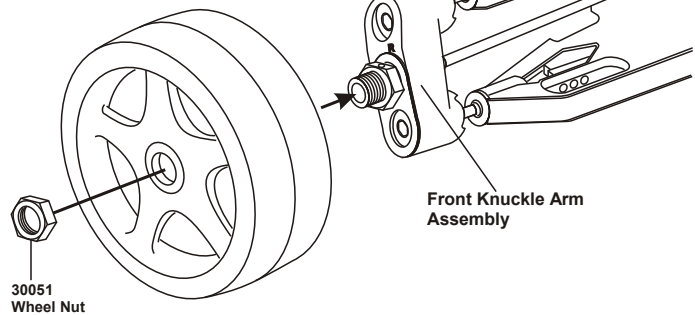
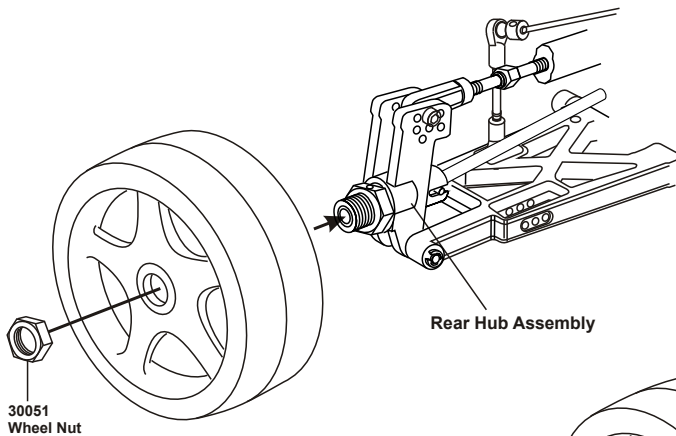
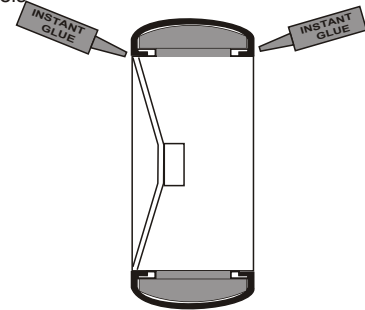


\* Insert sponge into the tire as shown.

\*Insert the tire into the grooves of the wheel.



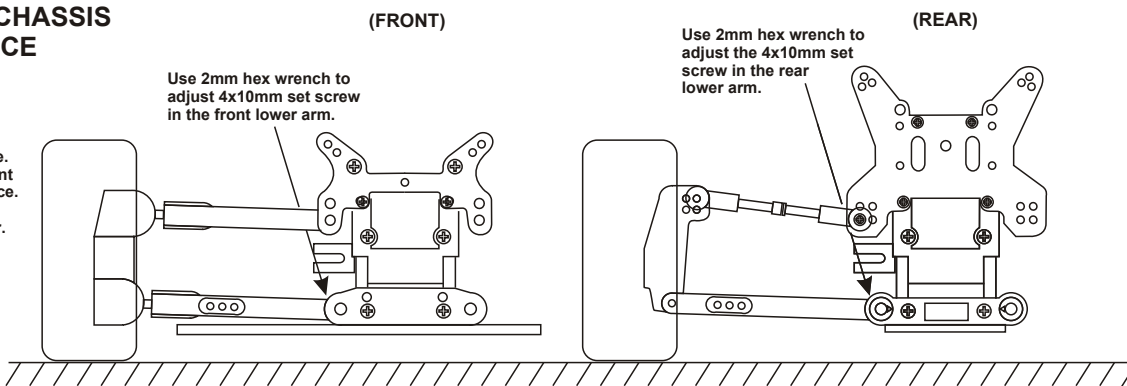
\* Apply instant glue into the grooves of the wheel.



# SET-UP

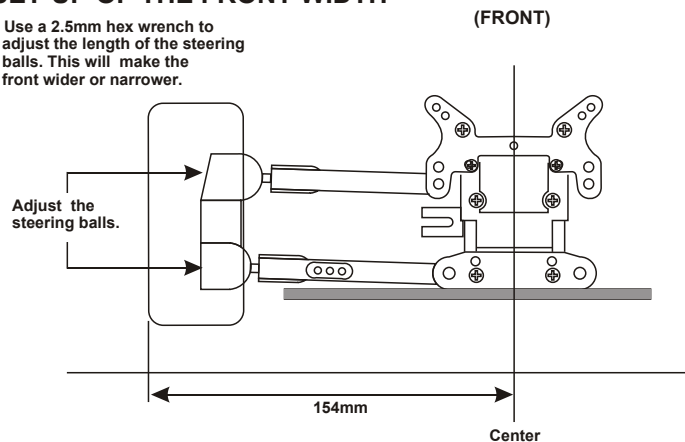
## ADJUSTMENT OF THE CHASSIS RIDE HEIGHT CLEARANCE

- Place the model car on a flat surface. Use a 2mm hex wrench to adjust the chassis to it's minimum clearance.
- We Suggest: 10mm in front and rear.
- Adjust the right and left-hand side to the same height.

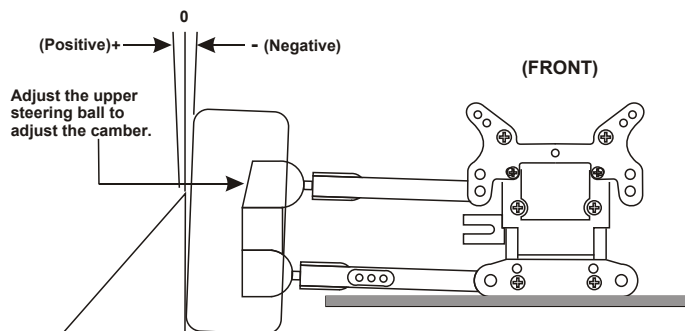


## SET-UP OF THE FRONT WIDTH

\* Use a 2.5mm hex wrench to adjust the length of the steering balls. This will make the front wider or narrower.



## ADJUSTMENT OF THE FRONT AND REAR CAMBER



## FRONT TOE-IN AND TOE-OUT SETTINGS

Adjust the length of the front steering rod to change the toe angle.

Making the steering rod longer will make the front tires become toe-in. The Response will be slower.

Making the steering rod shorter will make the front tires become toe-out. The Response will be quicker.

